

55 Lon Glanfor, Abergele, LL22 9YQ

£250,000

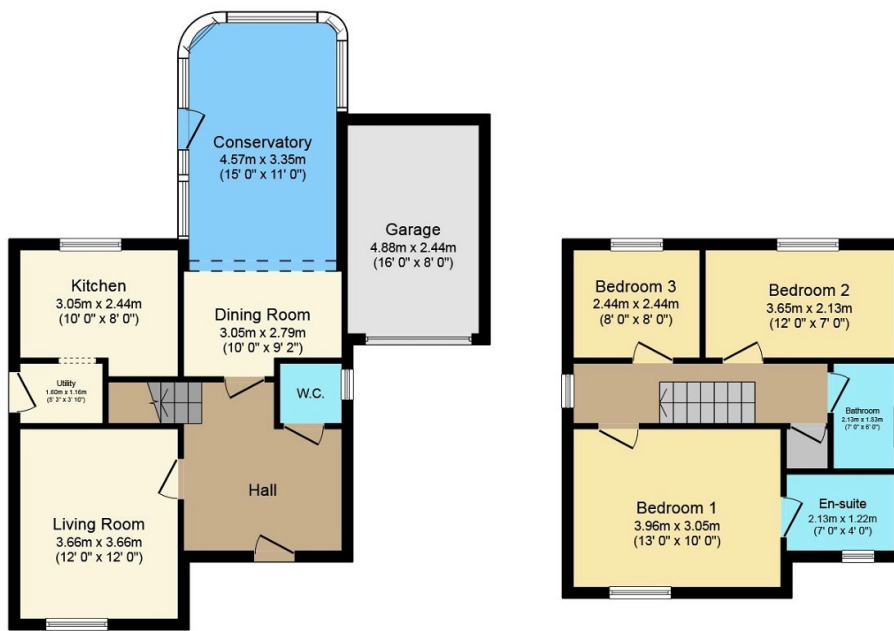
3 3 2



A lovely modern, detached house which comprises of three bedrooms, one with en-suite and a spacious open plan dining room leading into the conservatory which overlooks the attractive rear garden. This property provides a bright kitchen, utility area, lounge space which is currently used as a playroom and a downstairs cloakroom. To the front of the property the garden is laid to lawn with trees and greenery. A concrete driveway provides off-street parking with a single garage which has power and light available. To the rear of the property is a generous size, south facing garden featuring a wooden pergola perfect for outdoor entertainment. With a patio area, garden mostly laid to lawn and a variety of shrubs and plants. This property is located in a popular coastal area just a few minutes drive away from the promenade and Pensarn beach.

Key Features

- Tenure - Freehold
- Council Tax Band - E
- EPC - C
- No Forward Chain
- Conservatory
- Off- Street Parking
- Garage
- South Facing Garden
- Three Bedrooms
- Attractive Property



Ground Floor

Floor area 63.0 sq.m. (679 sq.ft.) approx

First Floor

Floor area 38.7 sq.m. (417 sq.ft.) approx

Total floor area 101.7 sq.m. (1,095 sq.ft.) approx

This plan is for illustration purposes only and may not be representative of the property. Plan not to scale.

Powered by audioagent.com